

# ALKANET

An impressively light and airy family home, the Alkanet is a four-bedroom, three-storey property with a single garage and off-road parking for two cars.

154 sq m (1,658 sq ft)

## CHILMINGTON RISE KENT

ASHFORD KENT TN23 3DN

[www.chilmington-rise.co.uk](http://www.chilmington-rise.co.uk)

Connells

# ALKANET

An impressively light and airy family home, the Alkanet is a four-bedroom, three-storey property with a single garage and off-road parking for two cars.

**154 sq m (1,658 sq ft)**

With contrasting bricks and metal accents the property has a distinctly architectural look. Inside you'll discover an open plan kitchen/diner, a spacious living room and 4 dual aspect bedrooms.

## GROUND FLOOR

### Kitchen / Dining Area

4.38m max x 5.56m max 14'5" max x 18'3" max

### Living Room

4.40m x 4.37m 14'5" x 14'4"

## FIRST FLOOR

### Bedroom 2 with en-suite

4.39m x 2.68m 14'5" x 8'9"

### Bedroom 4

4.39m x 2.35m 14'5" x 7'8"

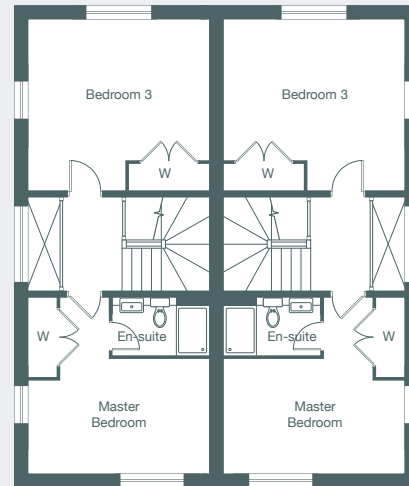
## SECOND FLOOR

### Master Bedroom with en-suite

4.39m max x 2.84m x 14'5" max x 9'4"

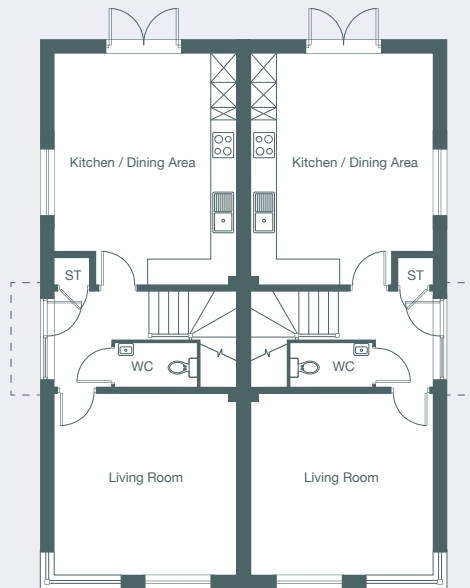
### Bedroom 3

4.39m max x 4.24m max 14'5" max x 13'11" max



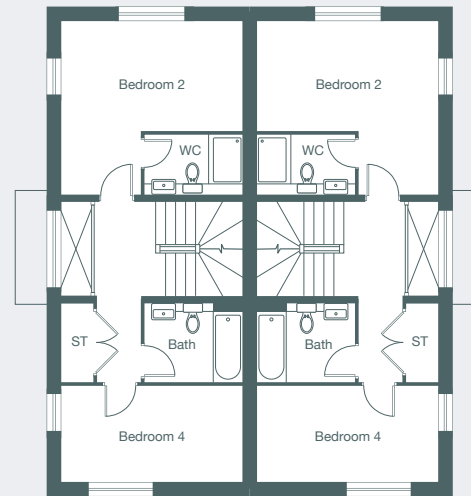
Second Floor Plan Left

Second Floor Plan Right



Ground Floor Plan Left

Ground Floor Plan Right



First Floor Plan Left

First Floor Plan Right

Each set of floor plans may be reproduced at a different scale to others within the brochure. Floor plans, dimensions and CGI illustrations are indicative only and can be liable to change during construction. Please check with the sales agent if you require further information.



### Sales Suite

Open Daily  
Monday to Sunday 10am-5pm

### Telephone

01233 622 206  
01233 502 020

### ALKANET

Plots 200, 201.