



CAMPION

A traditional family home, with a modern aesthetic, the Champion is an impressive four-bedroom, two-storey property.

124 sq m (1,335 sq ft)

CHILMINGTON RISE KENT

ASHFORD KENT TN23 3DN

Connells

www.chilmington-rise.co.uk

CAMPION

A traditional family home, with a modern aesthetic, the Champion is an impressive four-bedroom, two-storey property.

Allocation of garages, carports and off-road parking differs from plot to plot. For more information, please speak to the sales team.

124 sq m (1,335 sq ft)

The traditional look of the property is enhanced with an elegant chimney, slatted weatherboarding to the first floor and anthracite coloured metal to the ground floor window and entrance.

Inside the house is laid out in traditional fashion, with the living area on the ground floor and the bedrooms on the first.

GROUND FLOOR

Living Room

6.08m x 3.55m 20'0" x 11'8"

Kitchen

3.43m x 3.16m 11'3" x 10'4"

Dining Area

4.57m x 3.16m 15'0" x 10'4"

FIRST FLOOR

Master Bedroom with en-suite

3.18m max x 3.11m x 10'5" max x 10'3"

Bedroom 2

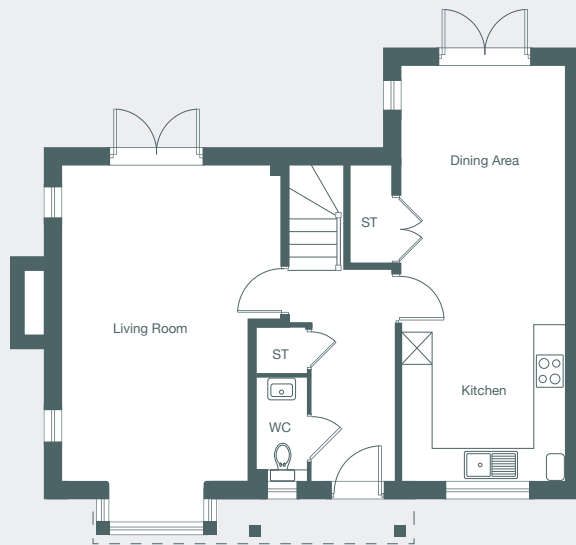
3.68m max x 3.54m max 11'10" max x 11'8" max

Bedroom 3

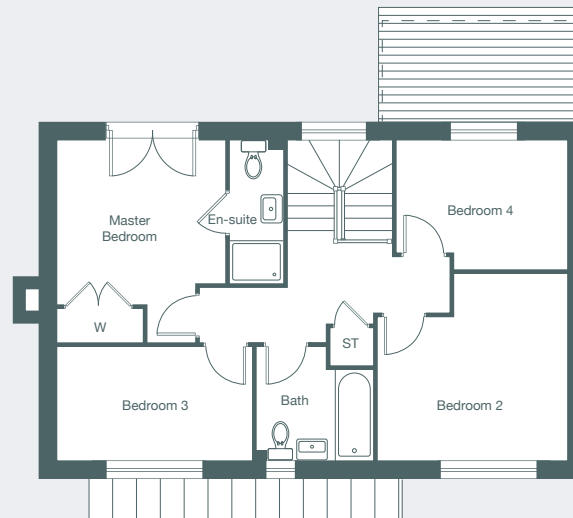
3.68m x 2.15m 12'1" x 7'1"

Bedroom 4

3.25m max x 2.44m max 10'8" max x 8'0" max



Ground Floor Plan



First Floor Plan

Each set of floor plans may be reproduced at a different scale to others within the brochure. Floor plans, dimensions and CGI illustrations are indicative only and can be liable to change during construction. Please check with the sales agent if you require further information.



Sales Suite

Open Daily
Monday to Sunday 10am-5pm

Telephone

01233 622 206
01233 502 020

CAMPION

Plots 50, 71, 81, 99, 100, 103.