

---

# HEVER

---

An exclusive collection of just 11 luxurious  
2 bedroom apartments in a beautiful landscaped setting

The logo for Connells, featuring the word "Connells" in white, bold, sans-serif font, centered within a red rectangular box.

**Connells**

BUILT BY THAKEHAM PARTNERSHIPS

HEVER



## Site Plan Key

### 1: CHARTWELL

7 x 2-bedroom apartments

### 2: SCOTNEY

7 x 2-bedroom apartments

### 3: GODINGTON

8 x 2-bedroom apartments

### 4: WALMER

7 x 2-bedroom apartments

### 5: HEVER

11 x 2-bedroom apartments

### 6: EMMETTS

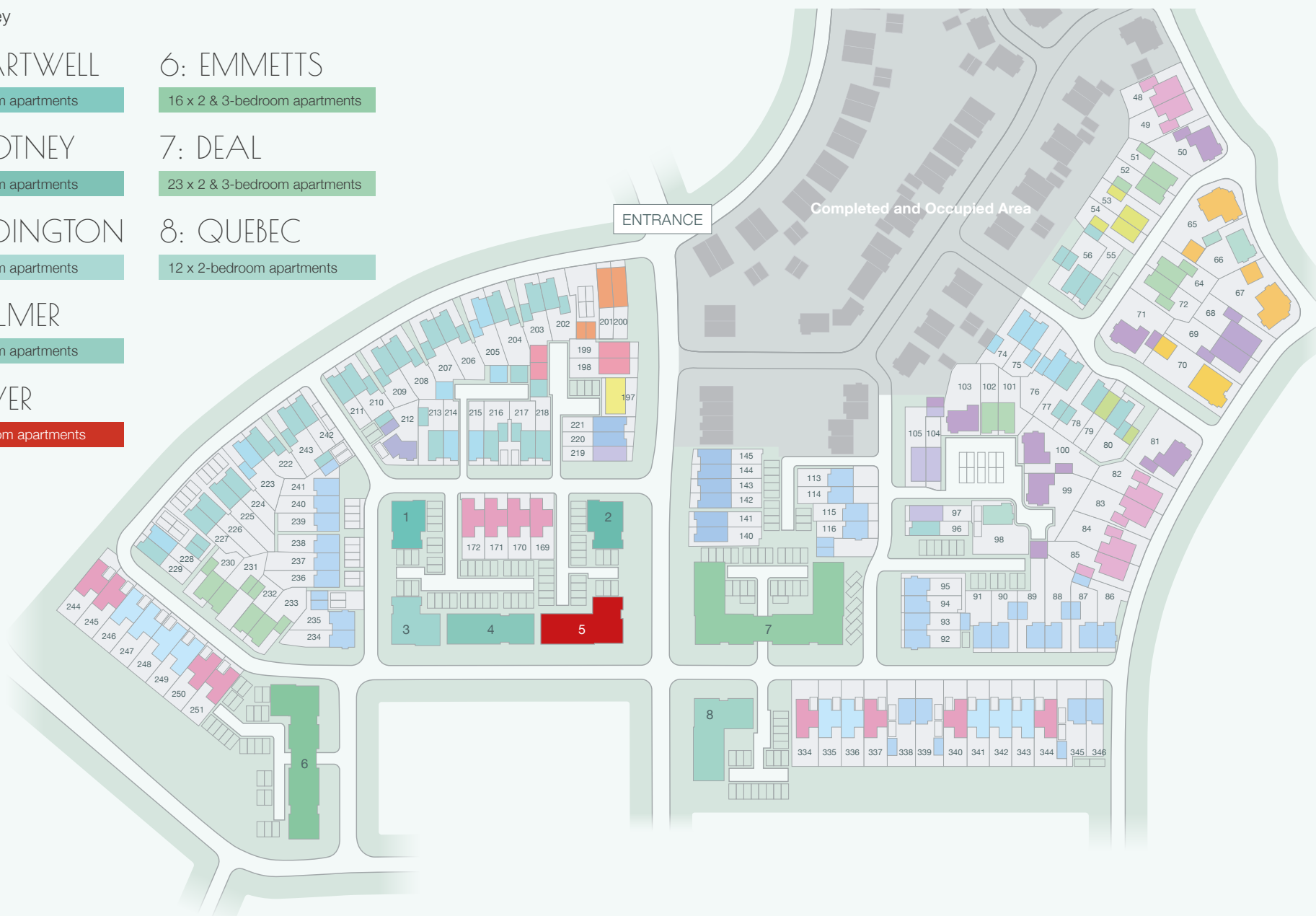
16 x 2 & 3-bedroom apartments

### 7: DEAL

23 x 2 & 3-bedroom apartments

### 8: QUEBEC

12 x 2-bedroom apartments

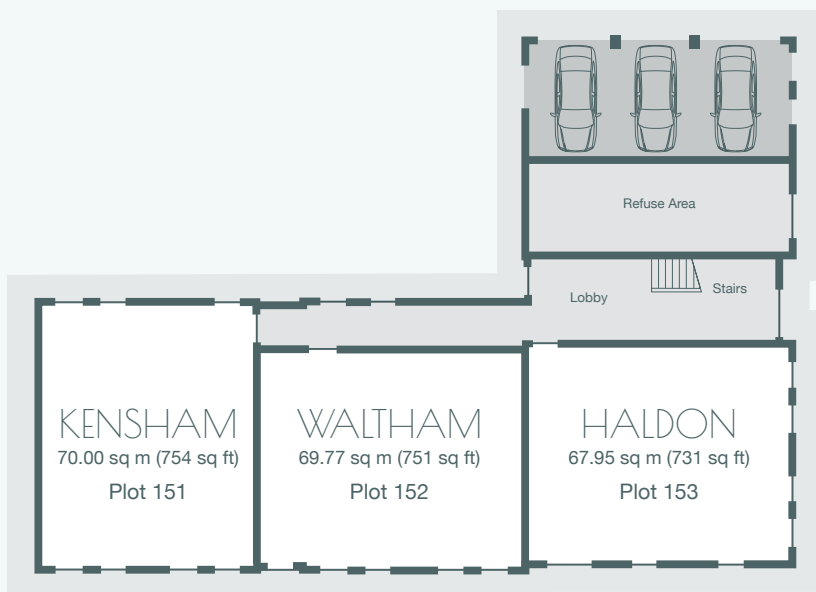


The site plan has been created from the original drawings. Details can be subject to change during construction. Please check with the sales agent if you require further information.

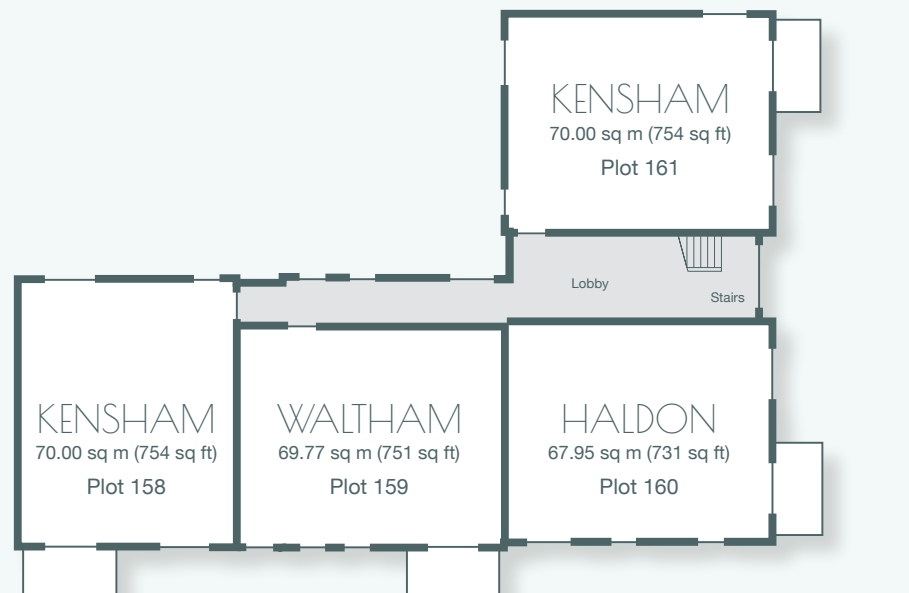
**Connells**

# HEVER

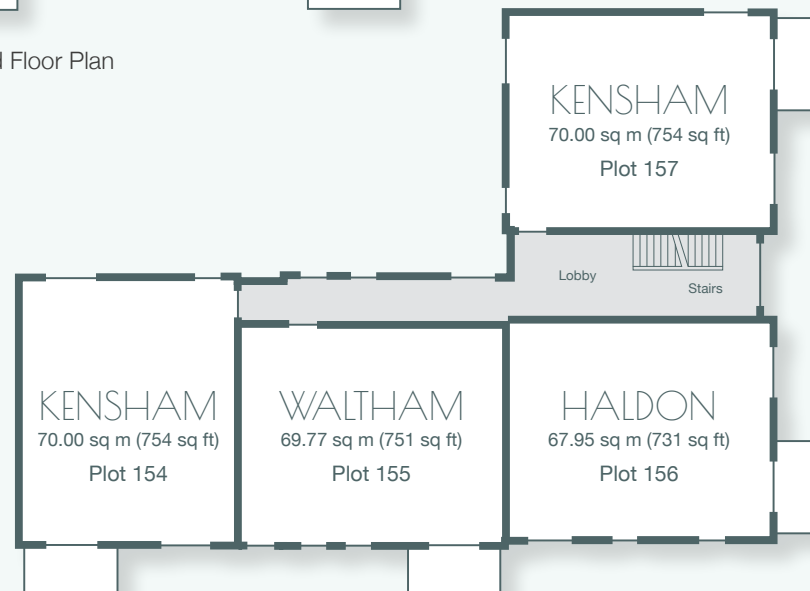
An exclusive collection of just 11 luxurious  
2 bedroom apartments in a beautiful landscaped setting



Ground Floor Plan

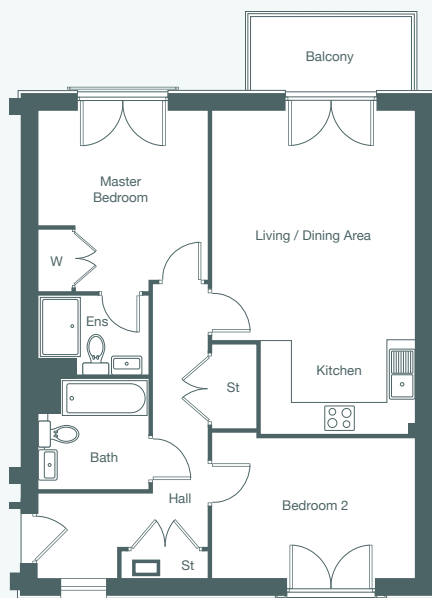


Second Floor Plan

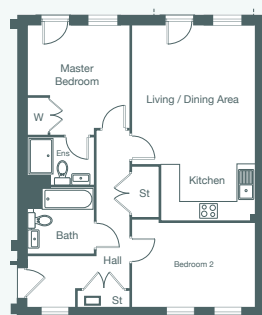


First Floor Plan





First & Second Floor



Ground Floor

# KENSHAM

70.00 sq m (754 sq ft)

## Kitchen

3.10m x 1.87m 10'2" x 6'2"

## Living / Dining Area

4.53m x 4.07m 14'10" x 13'4"

## Master Bedroom with en-suite

3.58m x 3.36m 11'9" x 11'0"

## Bedroom 2

4.07m x 2.81m 13'4" x 9'3"

## Second Floor: Plot 158 & 161

French doors open to a balcony off the Living / Dining Area. The Master Bedroom features a Juliet balcony.

## First Floor: Plot 154 & 157

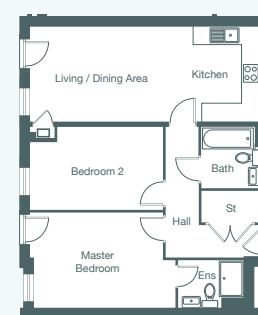
French doors open to a balcony off the Living / Dining Area. The Master Bedroom features a Juliet balcony.

## Ground Floor: Plot 151

Doors from the Living / Dining Area and the Master Bedroom open onto paved patio areas.



First & Second Floor



Ground Floor

# WALTHAM

69.77 sq m (751 sq ft)

## Kitchen

3.15m x 2.04m 10'4" x 6'8"

## Living / Dining Area

5.56m x 3.15m 18'3" x 10'4"

## Master Bedroom with en-suite

4.69m x 3.15m 15'5" x 10'4"

## Bedroom 2

4.39m x 2.73m 14'5" x 9'0"

## Second Floor: Plot 159

Features French doors to a balcony off the Living / Dining Area.

## First Floor: Plot 155

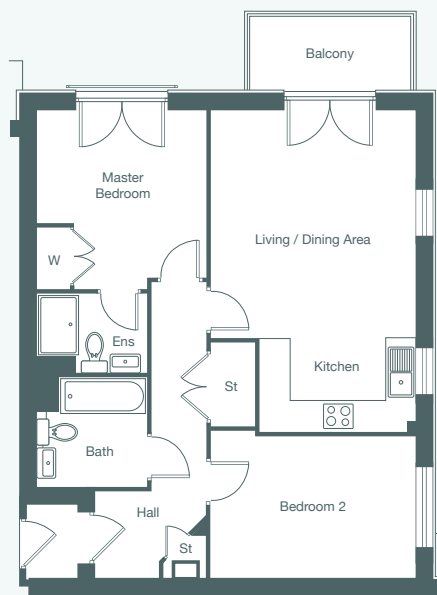
Features French doors to a balcony off the Living / Dining Area.

## Ground Floor: Plot 152

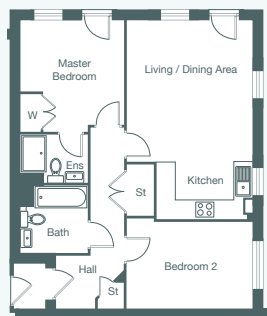
Doors from the Living / Dining Area and the Master Bedroom open onto paved patio areas.

Each set of floor plans may be reproduced at a different scale to others within the brochure. Floor plans, dimensions and CGI illustrations are indicative only and can be liable to change during construction. Some apartment floor plans may be rotated for clarity. For correct orientation, please refer to the block site plan. Please check with the sales agent if you require further information.

Connells



First & Second Floor



Ground Floor

# HALDON

67.95 sq m (731 sq ft)

## Kitchen

3.10m x 1.87m 10'2" x 6'2"

## Living / Dining Area

4.53m x 4.07m 14'10" x 13'4"

## Master Bedroom with en-suite

3.58m x 3.36m 11'9" x 11'0"

## Bedroom 2

4.07m x 2.81m 13'4" x 9'3"

## Second Floor: Plot 160

French doors open to a balcony off the Living / Dining Area. The Master Bedroom features a Juliet balcony.

## First Floor: Plot 156

French doors open to a balcony off the Living / Dining Area. The Master Bedroom features a Juliet balcony.

## Ground Floor: Plot 153

Doors from the Living / Dining Area and the Master Bedroom open onto paved patio areas.

## SPECIFICATION

All apartments at Chilmington Rise feature an outstanding attention to detail. It's this detail and finish that lifts each property to the highest specification - resulting in a superb, luxury home.

## KITCHEN

- Luxury fitted range of base and wall units
- Laminated worktop with matching upstand
- Electric single oven with 4-burner gas hob
- Toughened glass splash-back behind hob
- Stainless steel extractor hood
- Fridge/freezer
- Dishwasher
- Washing machine
- One bowl sink unit with mixer tap

## BATHROOMS & EN-SUITES

- White sanitaryware
- Chrome bath and basin taps
- Fully tiled shower cubicle (where applicable)
- Exposed shower valve - complete with hose and rail kit in shower cubicle (where applicable)
- Full height tiling above bath
- Tiled splashback above basin in bathroom, en-suite and cloakroom
- Low energy recessed spotlights

## EXTERNAL FINISHES

- uPVC double glazed windows and doors
- uPVC soffits and fascias

## INTERNAL FINISHES

- White emulsion walls and ceiling
- Gas fired central heating
- Flush white internal doors with chrome fittings
- Pendant lighting throughout

Each set of floor plans may be reproduced at a different scale to others within the brochure. Floor plans, dimensions and CGI illustrations are indicative only and can be liable to change during construction. Some apartment floor plans may be rotated for clarity. For correct orientation, please refer to the block site plan. Please check with the sales agent if you require further information.

Connells



CGI enhanced images of actual Chilmington Rise interiors.  
Fitted kitchens (as illustrated above) can be offered as an incentive, or for an extra cost.  
Specifications can change without notice. Always check details with your sales agent  
before committing to purchase.

**Connells**

CHILMINGTON  
**R I S E**  
KENT

**Sales Suite**  
Ashford Road  
Ashford, Kent TN23 3DN

**Open Daily**  
Monday to Sunday 10am-5pm

**Telephone**  
01233 622 206 01233 502 020

**Email**  
chilmingtonrise@connells.co.uk

**Sat Nav**  
TN23 3DN

[www.chilmington-rise.co.uk](http://www.chilmington-rise.co.uk)

**Connells**

BUILT BY THAKEHAM PARTNERSHIPS

Connells Residential is registered in England and Wales under company number 1489613. Registered Office is Cumbria House, 16-20 Hockliffe Street, Leighton Buzzard, Bedfordshire LU7 1GN. VAT Registration Number is 500 2481 05.



V1 APRIL 2024

© Copyright 2024 Connells Residential. All rights reserved