

SCOTNEY

An exclusive collection of just 7 luxurious
2 bedroom apartments in a beautiful landscaped setting

Connells

BUILT BY THAKEHAM PARTNERSHIPS

SCOTNEY



Site Plan Key

1: CHARTWELL

7 x 2-bedroom apartments

2: SCOTNEY

7 x 2-bedroom apartments

3: GODINGTON

8 x 2-bedroom apartments

4: WALMER

7 x 2-bedroom apartments

5: HEVER

11 x 2-bedroom apartments

6: EMMETTS

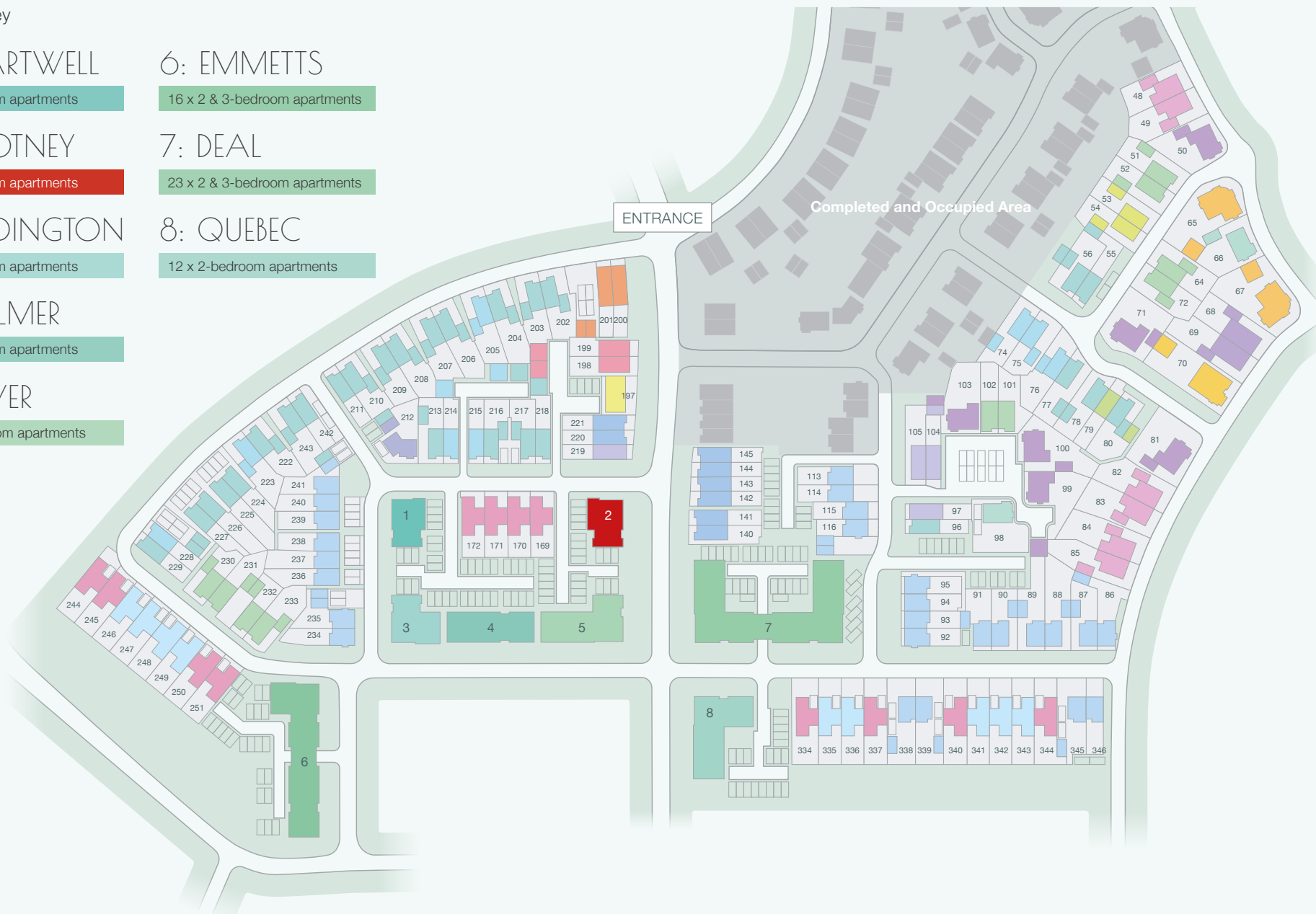
16 x 2 & 3-bedroom apartments

7: DEAL

23 x 2 & 3-bedroom apartments

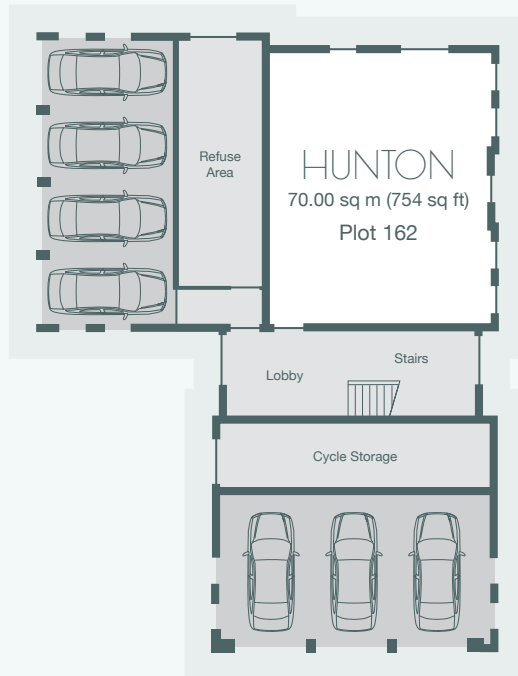
8: QUEBEC

12 x 2-bedroom apartments

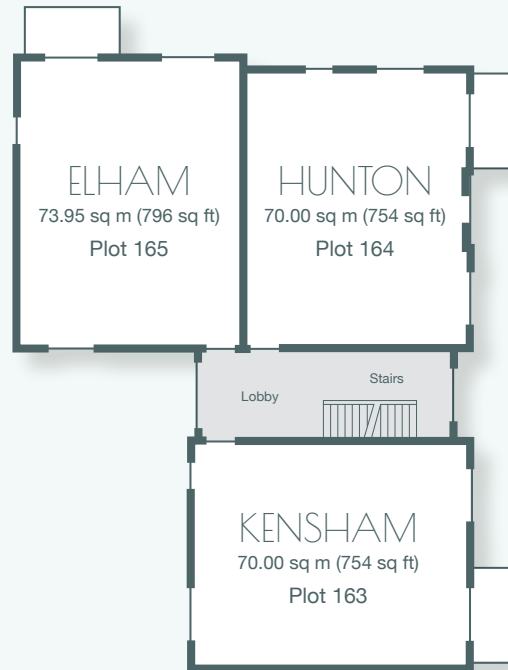


The site plan has been created from the original drawings. Details can be subject to change during construction. Please check with the sales agent if you require further information.

Connells



Ground Floor Plan



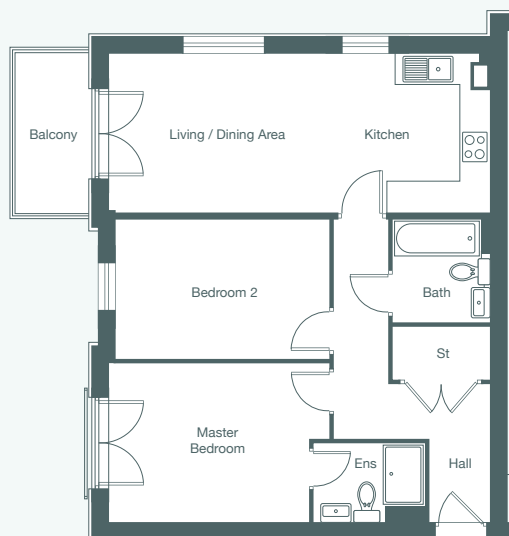
First Floor Plan



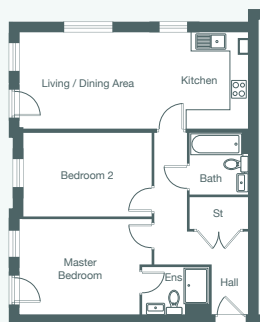
Second Floor Plan

SCOTNEY

An exclusive collection of just 7 luxurious
2 bedroom apartments in a beautiful landscaped setting



First & Second Floor



Ground Floor

HUNTON

70.00 sq m (754 sq ft)

Kitchen

3.15m x 2.04m 10'4" x 6'8"

Living / Dining Area

5.51m x 3.15m 18'1" x 10'4"

Master Bedroom with en-suite

3.95m x 3.15m 12'11" x 10'4"

Bedroom 2

4.24m x 2.73m 13'11" x 9'0"

Second Floor: Plot 167

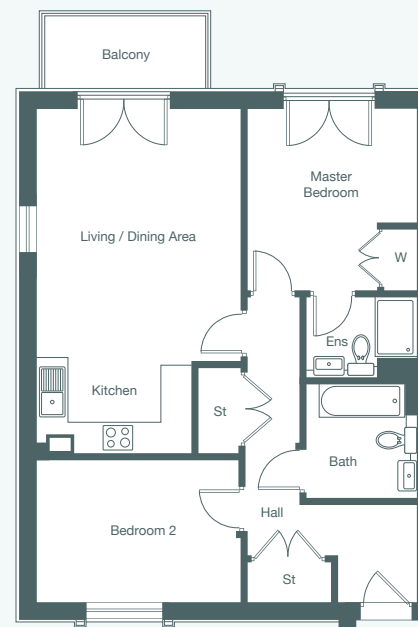
French doors open to a balcony off the Living / Dining Area. The Master Bedroom features a Juliet balcony.

First Floor: Plot 164

French doors open to a balcony off the Living / Dining Area. The Master Bedroom features a Juliet balcony.

Ground Floor: Plot 162

Doors from the Living / Dining Area and the Master Bedroom open onto paved patio areas.



ELHAM

73.95 sq m (796 sq ft)

Kitchen

3.05m x 1.82m 10'0" x 6'0"

Living / Dining Area

4.99m x 4.02m 16'4" x 13'2"

Master Bedroom with en-suite

3.58m x 3.39m 11'9" x 11'1"

Bedroom 2

4.02m x 2.86m 13'2" x 9'5"

Second Floor: Plot 168

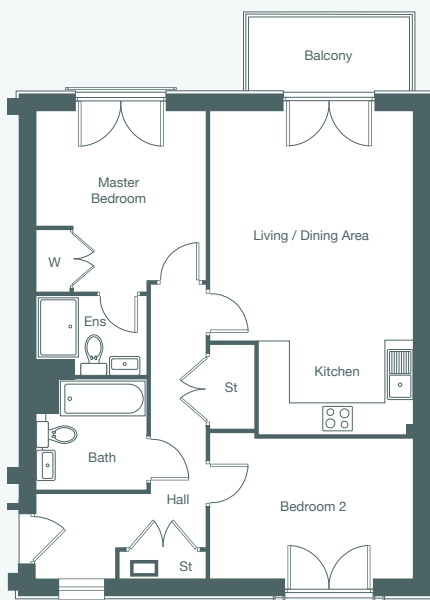
French doors open to a balcony off the Living / Dining Area. The Master Bedroom features a Juliet balcony.

First Floor: Plot 165

French doors open to a balcony off the Living / Dining Area. The Master Bedroom features a Juliet balcony.

Each set of floor plans may be reproduced at a different scale to others within the brochure. Floor plans, dimensions and CGI illustrations are indicative only and can be liable to change during construction. Some apartment floor plans may be rotated for clarity. For correct orientation, please refer to the block site plan. Please check with the sales agent if you require further information.

Connells



KENSHAM

70.00 sq m (754 sq ft)

Kitchen

3.10m x 1.87m 10'2" x 6'2"

Living / Dining Area

4.53m x 4.07m 14'10" x 13'4"

Master Bedroom with en-suite

3.58m x 3.36m 11'9" x 11'0"

Bedroom 2

4.07m x 2.81m 13'4" x 9'3"

Second Floor: Plot 166

French doors open to a balcony off the Living / Dining Area. The Master Bedroom features a Juliet balcony.

First Floor: Plot 163

French doors open to a balcony off the Living / Dining Area. The Master Bedroom features a Juliet balcony.

SPECIFICATION

All apartments at Chilmington Rise feature an outstanding attention to detail. It's this detail and finish that lifts each property to the highest specification - resulting in a superb, luxury home.

KITCHEN

- Luxury fitted range of base and wall units
- Laminated worktop with matching upstand
- Electric single oven with 4-burner gas hob
- Toughened glass splash-back behind hob
- Stainless steel extractor hood
- Fridge/freezer
- Dishwasher
- Washing machine
- One bowl sink unit with mixer tap

BATHROOMS & EN-SUITES

- White sanitaryware
- Chrome bath and basin taps
- Fully tiled shower cubicle (where applicable)
- Exposed shower valve - complete with hose and rail kit in shower cubicle (where applicable)
- Full height tiling above bath
- Tiled splashback above basin in bathroom, en-suite and cloakroom
- Low energy recessed spotlights

EXTERNAL FINISHES

- uPVC double glazed windows and doors
- uPVC soffits and fascias

INTERNAL FINISHES

- White emulsion walls and ceiling
- Gas fired central heating
- Flush white internal doors with chrome fittings
- Pendant lighting throughout

Each set of floor plans may be reproduced at a different scale to others within the brochure. Floor plans, dimensions and CGI illustrations are indicative only and can be liable to change during construction. Some apartment floor plans may be rotated for clarity. For correct orientation, please refer to the block site plan. Please check with the sales agent if you require further information.

Connells



CGI enhanced images of actual Chilmington Rise interiors. Fitted kitchens (as illustrated above) can be offered as an incentive, or for an extra cost. Specifications can change without notice. Always check details with your sales agent before committing to purchase.

CHILMINGTON
RISE
KENT

Sales Suite
Ashford Road
Ashford, Kent TN23 3DN

Open Daily
Monday to Sunday 10am-5pm

Telephone
01233 622 206 01233 502 020

Email
chilmingtonrise@connells.co.uk

Sat Nav
TN23 3DN

www.chilmington-rise.co.uk

Connells

BUILT BY THAKEHAM PARTNERSHIPS

Connells Residential is registered in England and Wales under company number 1489613. Registered Office is Cumbria House, 16-20 Hockliffe Street, Leighton Buzzard, Bedfordshire LU7 1GN. VAT Registration Number is 500 2481 05.



V1 APRIL 2024

© Copyright 2024 Connells Residential. All rights reserved